

Rectifier Shelf - 9 Position

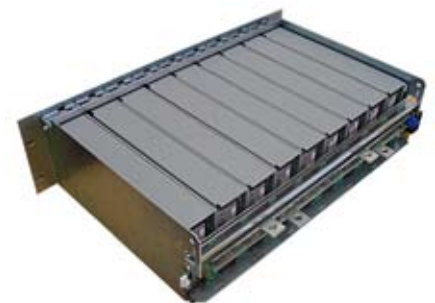
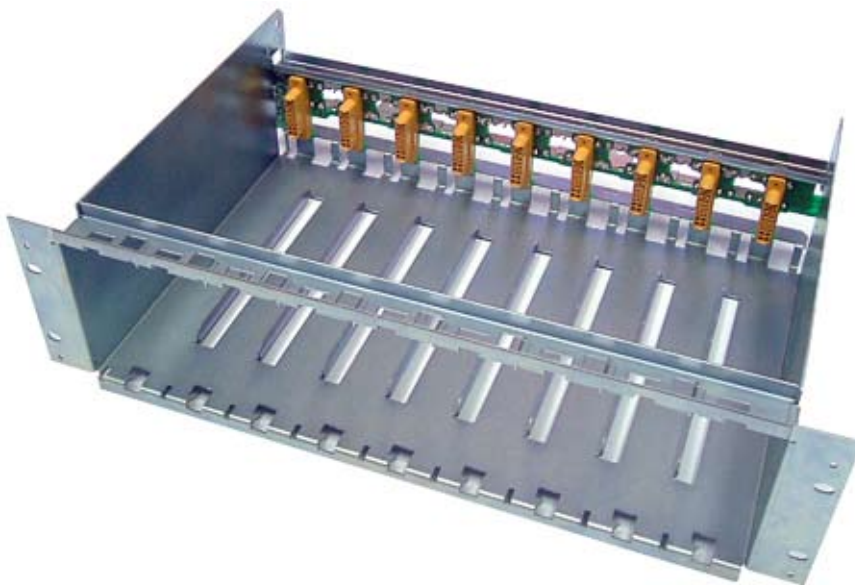
The ARS-9-3U rectifier shelf has been designed to allow up to 9x RM1848 rectifiers to be quickly and easily installed into a DC Power System.

It has been designed to mount into a standard 19" rack and occupies 3U of vertical height and 300mm of depth (including space at the rear for ventilation requirements).

When fully configured the ARS-9-3U accommodates 9x RM1848 rectifier modules and has a total capacity of up to 18.0kW.

The ARS-9-3U interfaces with the SM range of supervisory modules to control and monitor the power system.

- 9x RM1848 rectifier positions.
- Easily mounted in a 19" rack.
- 3U of vertical height.
- Up to 18.0kW output power.
- Interfaces with the SM range of supervisory modules.
- Ease of installation.



321 Tuam Street
PO Box 22-333
Christchurch
New Zealand

Phone +64-3-366-4550
Fax +64-3-366-0884
Email sales@enatel.net
www.enatel.net



Specifications

Mechanical

Dimensions, W, H, D: 482mm (standard 19" module), 133.3mm (3U), 300mm
Weight: 3.3kg (with no rectifiers fitted)
16.8kg (with 9 rectifiers fitted)

Part Number

Rectifier Shelf - 9 Position: ARS-9-3U